

# CERTIFICATE OF LOCATION OF GOVERNMENT CORNER

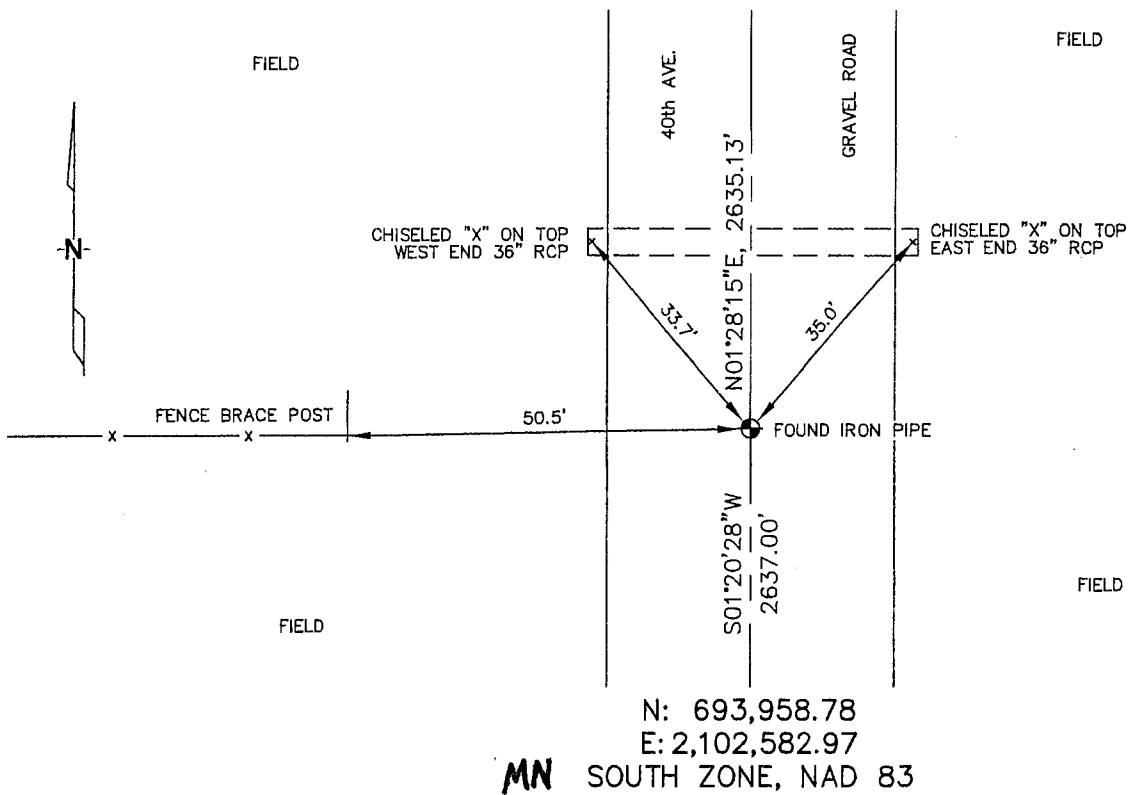
WEST 1/4 Corner of Section 14, Township 106, Range 43, 5th P.M.

STATE OF MINNESOTA, County of MURRAY

At the corner location shown on the sketch :

- On 3/22/2006 found AN IRON PIPE IN THE GRAVEL ROAD,  
OPPOSITE A FENCE LINE RUNNING WEST.
- left monument as found,     lowered monument,     removed monument (explain)
- On \_\_\_\_\_ set \_\_\_\_\_

Sketch of reference ties



Statement of evidence relative to this corner location is on back page

I hereby certify that this document and the data contained herein was prepared by me or under my direct supervision.

*James V. Johnson*                      3/22/06  
 Signature    Date

- Registration No. 44563
- Land Surveyor,     Professional Engineer
- County Surveyor,     County Engineer

OFFICE OF THE COUNTY RECORDER

County of \_\_\_\_\_

**SEP 28 2006**

I hereby certify that this document was filed in the Co. Recorders office at \_\_\_\_\_ M. on the \_\_\_\_\_ day of \_\_\_\_\_ A.D., 20

County Recorder *James V. Johnson*  
 By \_\_\_\_\_, Deputy

DOCUMENT NO. \_\_\_\_\_

STATEMENT OF EVIDENCE:

WEST 1/4 CORNER, SECTION 14, T. 106 N., R. 43 W.,  
MURRAY COUNTY, MINNESOTA

1866 J. W. BISHOP, U.S. DEPUTY SURVEYOR, MONUMENTED CORNER.

1958 MURRAY CO. HIGHWAY DEPT. FOUND 2"X2" HUBS OVER  
BROKEN PIECES OF FIELD STONE.

TIES: W - 64.9' TO NAIL + CAP IN FENCE POST.  
NE - 20.5' TO NAIL + CAP IN POST.

3/22/2006 UNTEG, ENGINEERS, INC. SURVEY CREW, BRIAN PAYNE  
PARTY CHIEF, FOUND AN IRON PIPE IN GRAVEL ROAD  
EASTERLY FROM FENCE LINE GOING WEST.  
TIES: W - 50.5' TO FENCE, BRACE POST.  
NW - 33.7' TO CHISELED "X" ON TOP, WEST END  
OF 36" R.C.P.  
NE - 35.0' TO CHISELED "X" ON TOP, EAST END  
OF 36" R.C.P.  
N - 2635.13' TO NW CORNER, SEC 14.  
S - 2637.00' TO SW CORNER, SEC. 14.